



# BLUEBASE™

An agile web platform for engineering  
and operational data management

19.01.2023

[christian.gaillard@dorisgroup.com](mailto:christian.gaillard@dorisgroup.com)

# BLUEBASE™ history



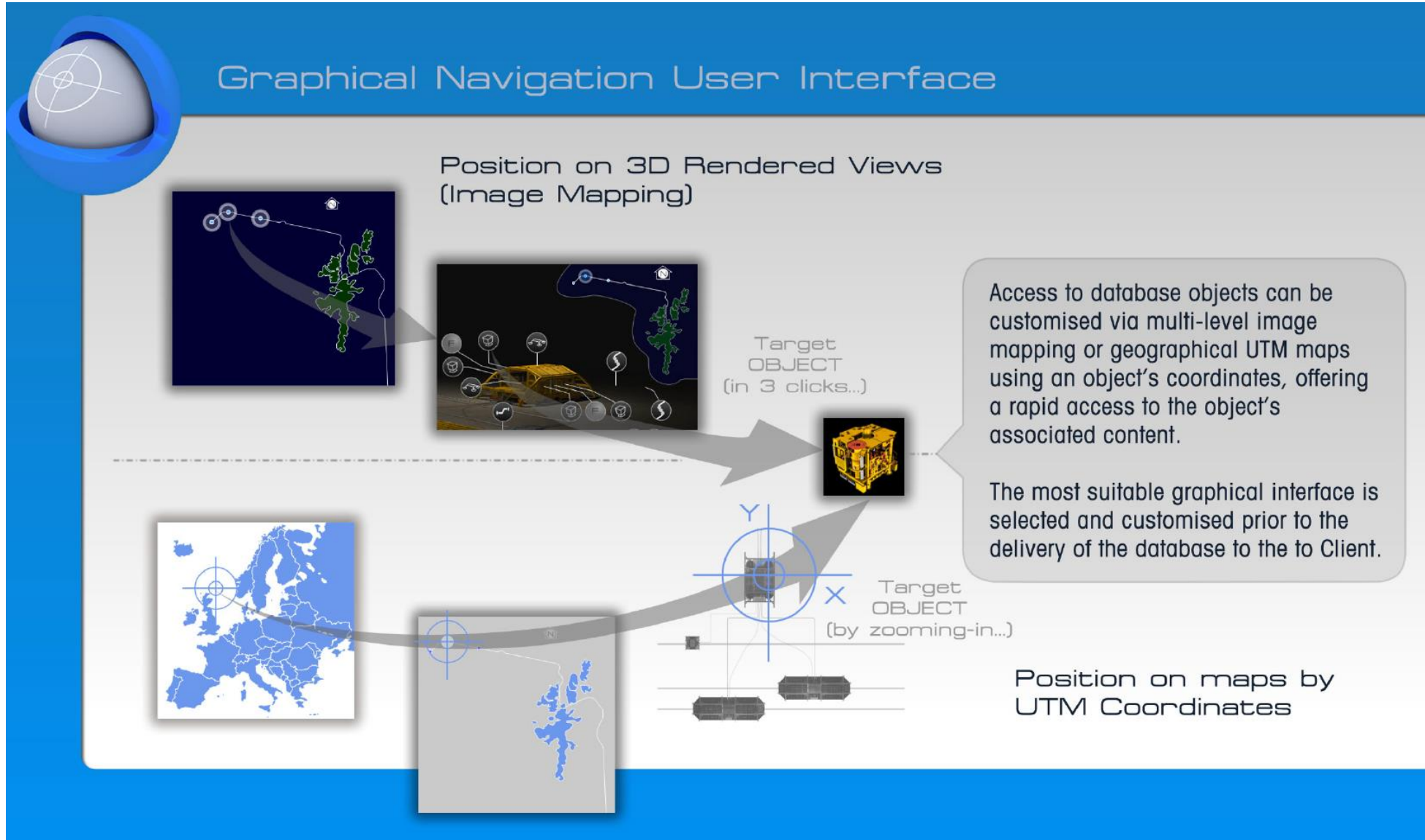
# BLUEBASE™

Access your Subsea Units in just 3 clicks...

Get instant access to equipment through multiple 3D rendered images, geographical maps (using UTM Object coordinates) or functional location (TAG)

The screenshot displays the BLUEBASE web application interface. At the top, there is a navigation bar with options like '3D Tour', 'Asset', 'Event History', 'Surveillance', 'Module Tracking', and 'NCR'. Below this is an 'Asset Register' section with a map of the 'Laggan Cluster'. A detailed view of a subsea unit, '3-PW-1031', is shown in the foreground. This view includes a 3D model of the unit, a 'Status' indicator (Specific Surveillance), and a table of events.

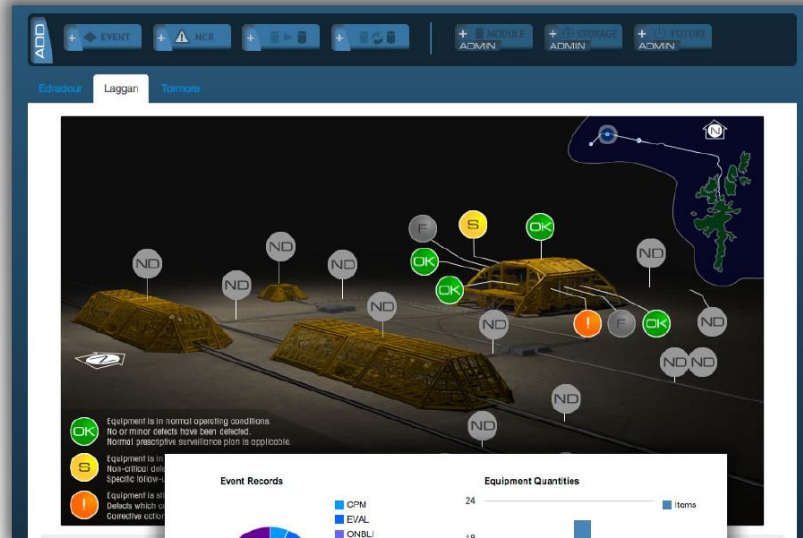
Event Type	Date	Description
Module Criticality	04-07-2013	EVAL-3-PW-1031-2013-04-0008 Equipment immediate status evaluation
Inspection Anomalies	04-05-2013	PINSP-3-PW-1031-2013-04-0005 Planned inspection (9 year program)
Module Change Out Logs	04-03-2013	CPM-3-PW-1031-2013-04-0002 Recording of CP valve using standard ROV portable probe



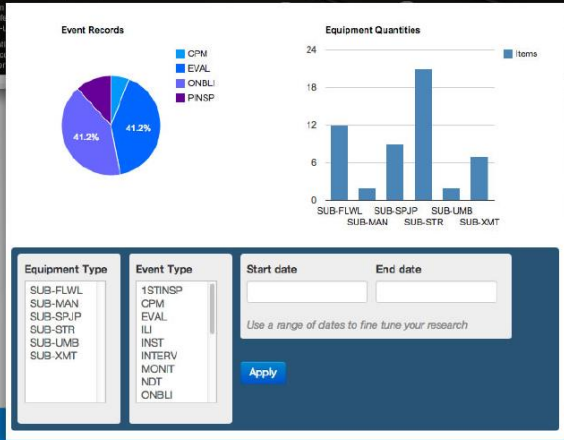




## Monitor the Global Status of your Assets...



Custom reporting maps can be set up with color coded logos which automatically change their appearance when some key database variable values (such as the equipment status field) are changing. Associated mouseover overlaid information can also be customised as required.



Dynamic output plotted charts are made available to readers for counting database occurrences such as event types, object status, recorded anomalies grouped by categories...

## Events records & History



Project Phase

Surveillance

Module Movements

Production

Integrity

RECORDED EVENTS

A user-friendly front end content publication is proposed using simplified forms with 'drag & drop' functionality for migrating batches of documents, inspection reports, pictures and videos.

3-PW-1031

Last Preventive Inspection Date: 04-17-2013

Status: Specific Surveillance

Inspection Area: UGDM

Working: 6 760 83mm

Ending: 07 300

WO: 0760

Events

Event Date	Date	Description
04-17-2013	04-17-2013	EVAS-3-PW-1031 Equipment Inspection
04-18-2013	04-18-2013	PINSP-3-PW-1031 Planned Inspection 3
04-19-2013	04-19-2013	CPM-3-PW-1031 Recording of CP values

Newly published content is automatically appearing in the displays of all related database elements.

Documents

Add a new file

Upload | Advanced upload

Cherchez un fichier | Aucun fichier choisi | Upload

Files must be less than 2 MB.

Allowed file types: txt doc pdf ppt xls xlsx docx zip rar odt.

Pictures

Add a new file

Upload | Advanced upload

Upload

Select one or more files to upload

Filename	Size	Status
Drop files here.		

+ Add files 0 b ON

Files must be less than 2 MB.

Allowed file types: png gif jpg jpeg

Start upload

Files must be less than 2 MB.

Allowed file types: png gif jpg jpeg



## Manage your NCR & associated Corrective Actions...

**Non-Conformity Register**

ADD + EVENT + NCR + [Icons] + MODULE ADMIN + HISTORICAL ADMIN + FUTURE ADMIN

NCR Severity: CRITICAL, DEGRADED, INCIPIENT, UNKNOWN  
 NCR Status: OPEN, CLOSED  
 Start date: [ ] End date: [ ] Apply

NCR ID	NCR Severity	Date	NCR Status	Description
NCR-2013-04-0001	DEGRADED	04-22-2013	OPEN	Loss of SEM A on Laggan well 4031
NCR-2013-04-0002	INCIPIENT	04-18-2013	OPEN	Erratic signal recorded on SCM S/N 002 installed on Xmas Tree 3-PW-1031

References: OREDA Failure Record

Subsea Units: 3-PW-5031

Modules: SCM\_PROD\_004

Non-Conformity Records can be attached independently to Subsea Units, Modules, Events or Inspection Anomalies. OREDA© has been used for the NCR categories, failure modes, failure mechanisms and components codification. Associated corrective actions follow-up tool covers Direct, Contribution or Root cause of failures.

**Corrective Actions List**

Type: NCR - CA Dossier, NCR - CA Simple Apply

NCR ID	Direct Cause CA	Action Status	Contribution Cause CA	Action Status	Root Cause CA	Action Status
CA-DOSSIER-2013-04-0001	Switch on SEM B power	DONE Action has been carried out.	Contact FMC with screen catches. Investigated loss of redundancy failure.	PROCESS Action is currently being processed. Recalls have been made, still awaiting for answers from involved personnel /parties.		
CA-SIMPLE-2013-04-0001	Investigate and send screen catches from smart tool to FMC	SUB Action submitted to relevant involved personnel /parties.				



## Interactive Dashboard



Smart display and reporting



## Data Export & Report Publication

Asset Register

Equipment Type	Area	Certification Status	Functional Location (Tag)	Technical Characteristics
CRN-TRAVEL	NKQSSA	NKQ2	NKQ2-C-J0901	Fixed pedestal mounted on railways. Telescopic boom, 6T at 10m
CRN-TRAVEL	PNGF_NORTH	YAF1	YAF1-ID-311	Fixed pedestal mounted on railways. Telescopic boom, 5T at 10m
CRN-TRAVEL	PNGF_NORTH	YAF1	YAF1-ID-311	Fixed pedestal mounted on railways. Telescopic boom, 5T at 10m

Report generation

Generate

Generate images

List of generated reports

Report filename	Date	Actions
2013-08-22_09-45-18.pdf	2013-08-22 09:45:18	<a href="#">View</a> <a href="#">Delete</a>

Table of Contents

- 1. Current Crane Status
- 2. Event History Summary Information
- 3. Asset Register
- 4. Inventory
- 5. Five Year

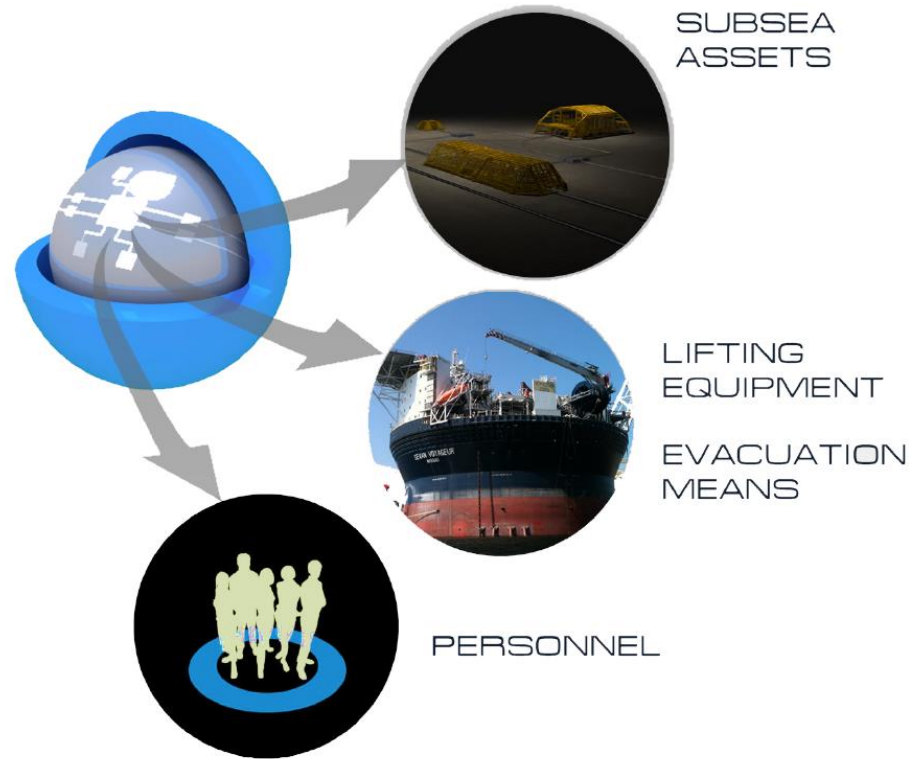
Chapter 2. Event History Summary Information

Chapter 1. Current Crane Status

All displayed lists can be exported to standard MS-Excel® spreadsheet to allow for complementary works outside the environment or to interface with any other system.

The system is fitted with an highly customisable PDF report generator module.

# Track records



# Thank you

**DORIS** Marine

**DORIS**

**Doris Marine SAS**  
Le Neuilly, Bâtiment B  
18 Boulevard Sergent Triaire  
30000 Nîmes  
FRANCE

**+33 6 71 54 70 52**  
christian.gaillard@dorisgroup.com

**dorisgroup.com**

# BACK-UP SLIDES

**DORIS** Marine

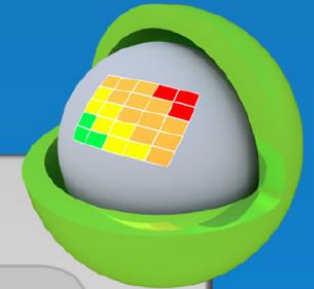
**DORIS**

**Doris Marine SAS**  
Le Neuilly, Bâtiment B  
18 Boulevard Sergent Triaire  
30000 Nîmes  
FRANCE

**+33 6 71 54 70 52**  
christian.gaillard@dorisgroup.com

**dorisgroup.com**





## Assess equipment status & manage your priorities...



Several dashboards with search engine are made available for surveillance activities. The inspection priority is automatically calculated as a function of the prescriptive frequencies and the elapsed time since last inspection. This offers a simple priority-based solution to optimise the use of Inspection Support Vessels.

The criticality of the asset equipment can be assessed with customisable susceptibility /consequence of failure ratings, criticality matrix size and threshold values.

### Equipment Status

Filtering on TAGS containing...

Overdue factor	Tag	Status	Prescriptive Insp. Freq.	Last Insp. Date	Related Events
	3-MAN-7071	OK	12months	2013-04-17	EVENT_ONBLI-2013-03-0176, EVAL-3-MAN-7071-2013-04-0012
	3-PW-1031	Specific Surveillance	12months	2013-04-17	EVENT_ONBLI-2013-03-0177, GPM-3-PW-1031-2013-04-0002, PINSP-3-PW-1031-2013-04-0005, EVAL-3-PW-1031-2013-04-0008
	3-PW-2031	OK	12months	2013-04-17	EVENT_ONBLI-2013-03-0178, EVAL-3-PW-2031-2013-04-0007



Keep track of your modular equipment...

Modules are attached to Subsea Units or storage locations (yards, workshops, vessels...). All movements and change out operations can be logged in the database. Associated logs are then automatically attached to the involved units, modules, and storage locations.

3-PW-1031

View **Criticality**

Xmas Tree is a set of valves, spools & fittings connected to the top of a well to isolate, direct and control the flow of wellbore fluids. Vertical type design (6inch Prod., 2inch Annulus Prod., 2inch MEG, 2inch Service, 5/8inch Scale and spare bores).

Last Prescriptive Inspection Date: 04-17-2013

Status: **Specific Surveillance**

Overdue factor:

Intervention Priority:

Inspection Area: **Module Change Out**

Module A \*  
Module to be replaced and currently located onto a Subsea unit. Please select a Subsea Unit first, then press Apply, then select the module to be replaced in the list.

Select Subsea Unit:

Select Content	Current Location
SRM_001	3-MAN-7071
SCM_MAN_002	2-MAN-7071

Module B \*  
Module to be mobilised and installed onto the Subsea Unit in replacement of Module A. Please select a Location first, press Apply and then select the replacement module in the list.

Select Location:

Events

Modules

Criticality

Inspection Anomalies

Module Change Out Logs

Picture

### Modules Storage Locations

Location ID /Name	Description
OFF-TEPUK-SVESSEL-001	TEPUK Maintenance and Support Vessel BOURBON JADE
DUM-FMC-YARD-002	FMC Technologies Xmas Tree fabrication yard, Dumferline, UK
NOR-FMC-YARD-001	FMC Technologies factory, Kongsberg, Norway



## User Profiles & Permissions

### Roles & Permissions Attribution

- R** Read Only Access
- M** Add /Edit Content
- A** Administration Tools

The application is dedicated to daily users involved in the asset management related activities, such as inspectors, maintenance engineers, department leaders or managers and can be shared with other parties via read only access set-up.

Fully customised User profiles and permissions can be set-up as required to best match the Client's organisation.

### User Profiles Set-Up for Database Access

Content Access Menu	<b>R</b>	<b>M</b>	<b>A</b>
Edit Menu	<b>M</b>	<b>A</b>	
Admin Menu			<b>A</b>

# BLUEBASE™ = ONE App

